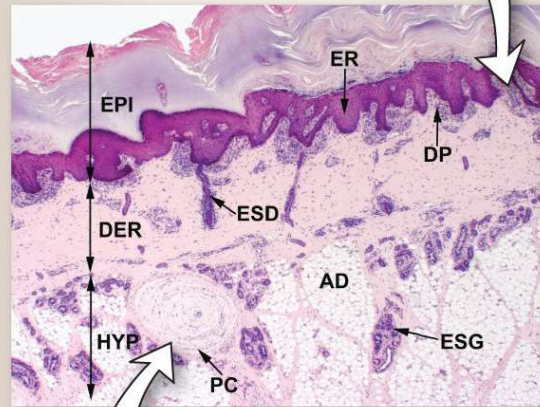


Meissner corpuscle located in the dermal papillae (not apparent at this magnification) functions in tactile, 2-point discrimination.



Pacinian corpuscle located in the dermis and hypodermis functions in touch, vibration, and pressure sensation.

Thin skin contains sebaceous glands associated with the hair follicle. Thin skin possesses hair ranging from fine vellous hair to coarse hair of the scalp.

